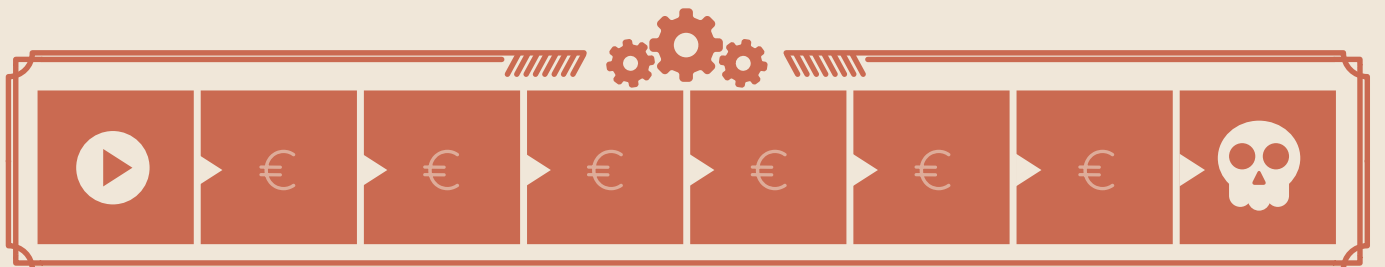
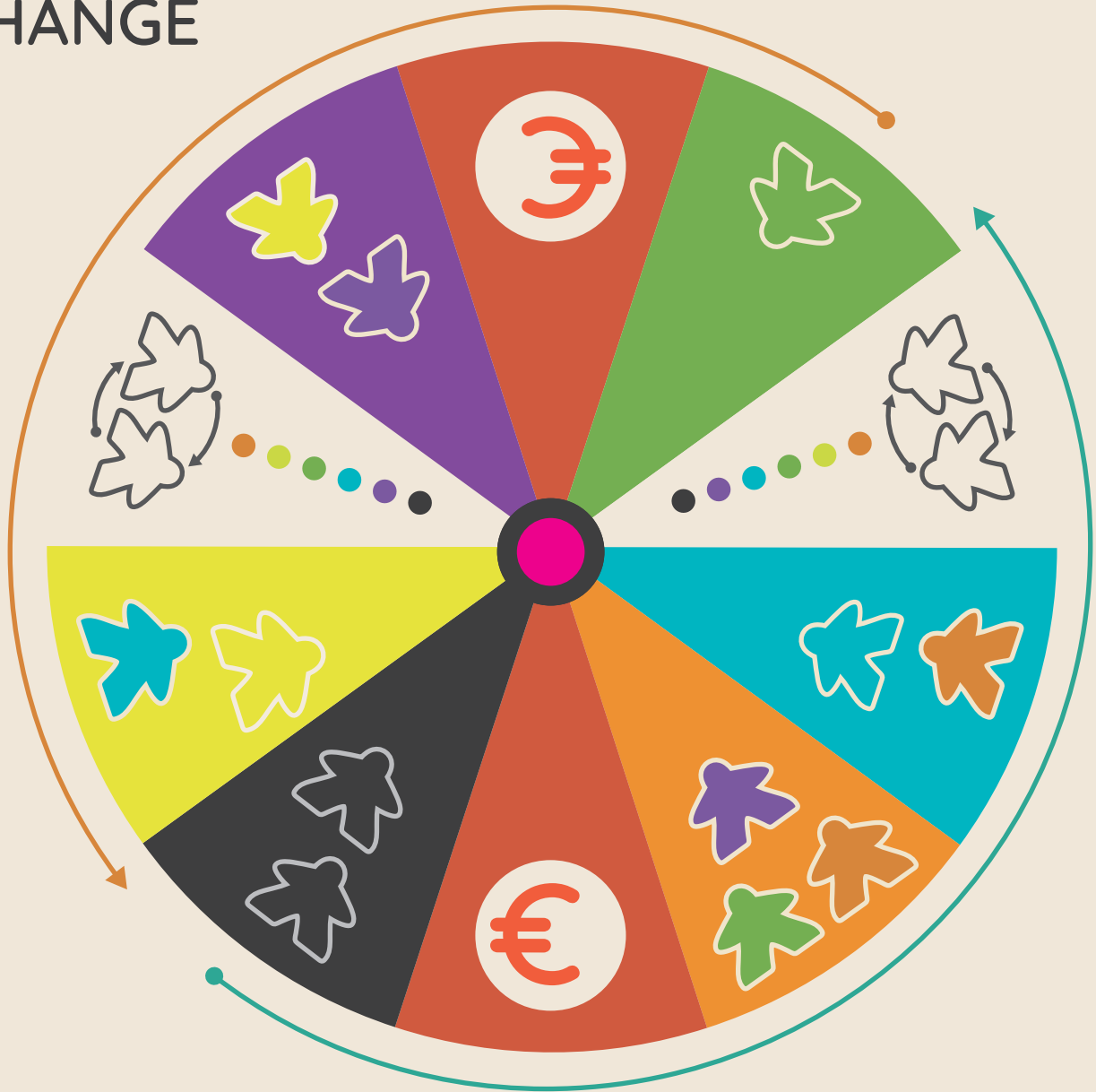


THE CHANGE



ACTIVE PEOPLE INTERESTS



Social Solidarity Economy



Agroecology



Feminist Economy



Communitarian Economy



Commons Economy



People interested in all branches

ACTIVE PEOPLE INTERESTS



Social Solidarity Economy



Agroecology



Feminist Economy



Communitarian Economy



Commons Economy



People interested in all branches

ACTIVE PEOPLE INTERESTS



Social Solidarity Economy



Agroecology



Feminist Economy



Communitarian Economy



Commons Economy



People interested in all branches

ACTIVE PEOPLE INTERESTS



Social Solidarity Economy



Agroecology



Feminist Economy



Communitarian Economy



Commons Economy



People interested in all branches

PLAYER'S TURN

1 PROMOTE THE COMMUNITARIAN POWER

- > Involve active people (take meeples from the common pile).
- > Communitarian power sharing (exchange meeples between the players).
- > Move forward the wooden pawn of the Current economic system track and draw an event card.

2 MOBILISE ACTIVE PEOPLE TO DEVELOP ONE TRANSFORMATIVE ECONOMIES INITIATIVE

- > You must mobilise enough active people as listed in the card and return them to the active people common pile.

3 TRY TO CHANGE ONE NEGATIVE EFFECT

- > Use between 3 and 6 cards of Transformative Economies initiatives TO CHANGE one negative effect card.
- > See the back of the negative effect cards to check the result.

SUCCESS ←→ FAIL

Keep the Transformative economies initiatives already developed active.

PLAYER'S TURN

1 PROMOTE THE COMMUNITARIAN POWER

- > Involve active people (take meeples from the common pile).
- > Communitarian power sharing (exchange meeples between the players).
- > Move forward the wooden pawn of the Current economic system track and draw an event card.

2 MOBILISE ACTIVE PEOPLE TO DEVELOP ONE TRANSFORMATIVE ECONOMIES INITIATIVE

- > You must mobilise enough active people as listed in the card and return them to the active people common pile.

3 TRY TO CHANGE ONE NEGATIVE EFFECT

- > Use between 3 and 6 cards of Transformative Economies initiatives TO CHANGE one negative effect card.
- > See the back of the negative effect cards to check the result.

SUCCESS ←→ FAIL

Keep the Transformative economies initiatives already developed active.

PLAYER'S TURN

1 PROMOTE THE COMMUNITARIAN POWER

- > Involve active people (take meeples from the common pile).
- > Communitarian power sharing (exchange meeples between the players).
- > Move forward the wooden pawn of the Current economic system track and draw an event card.

2 MOBILISE ACTIVE PEOPLE TO DEVELOP ONE TRANSFORMATIVE ECONOMIES INITIATIVE

- > You must mobilise enough active people as listed in the card and return them to the active people common pile.

3 TRY TO CHANGE ONE NEGATIVE EFFECT

- > Use between 3 and 6 cards of Transformative Economies initiatives TO CHANGE one negative effect card.
- > See the back of the negative effect cards to check the result.

SUCCESS ←→ FAIL

Keep the Transformative economies initiatives already developed active.

PLAYER'S TURN

1 PROMOTE THE COMMUNITARIAN POWER

- > Involve active people (take meeples from the common pile).
- > Communitarian power sharing (exchange meeples between the players).
- > Move forward the wooden pawn of the Current economic system track and draw an event card.

2 MOBILISE ACTIVE PEOPLE TO DEVELOP ONE TRANSFORMATIVE ECONOMIES INITIATIVE

- > You must mobilise enough active people as listed in the card and return them to the active people common pile.

3 TRY TO CHANGE ONE NEGATIVE EFFECT

- > Use between 3 and 6 cards of Transformative Economies initiatives TO CHANGE one negative effect card.
- > See the back of the negative effect cards to check the result.

SUCCESS ←→ FAIL

Keep the Transformative economies initiatives already developed active.

#1

FEMINIST COOPERATIVE



Social cooperative that promotes feminist empowerment, sustainability and circular economy



#2

COMMUNITY CENTRE



Collective space supporting collaborative projects and active citizenship



#3

NON-PROFIT SOCIAL COOPERATIVE



Cooperative enterprise led by people who value principles such as sustainability, social and environmental justice and feminism



#4

SOLIDARITY ASSOCIATION FOR WOMEN



Social initiative helping women victims of trafficking to rebuild their lives through mutuality and access to local resources





**TRANSFORMATIVE
ECONOMIES**

INITIATIVES

**TRANSFORMATIVE
ECONOMIES**

INITIATIVES

**TRANSFORMATIVE
ECONOMIES**

INITIATIVES

**TRANSFORMATIVE
ECONOMIES**

INITIATIVES

#5

ECO-FEMINIST CENTRE



Multi-use space focused on ecology and care, addressing climate change and rethinking the relationship between humans and nature



#6

LOCAL CURRENCY



Alternative currency created to support and promote the local economy



#7

AGROECOLOGICAL NETWORK FOR FARMERS



Association created to improve ecological practices and cooperation amongst farmers



#8

FEMINIST BOOKSHOP



Second-hand bookstore which aims to contribute to social justice by promoting transformative economies and feminism





9

CARE NETWORK



Collaborative project in support of families that need childcare



10

FAIR TRADE SHOP



Food and craft shop in the neighborhood where the producers (usually from the global South) have been paid fairly



11

PERMACULTURE CENTRE



Socio-political and cultural project that promotes permaculture through sustainable agricultural practices



12

SOCIAL ENTERPRISE



Social enterprise that promotes and hosts social, feminist and cultural projects and initiatives





**TRANSFORMATIVE
ECONOMIES**

INITIATIVES

**TRANSFORMATIVE
ECONOMIES**

INITIATIVES

**TRANSFORMATIVE
ECONOMIES**

INITIATIVES

**TRANSFORMATIVE
ECONOMIES**

INITIATIVES

13

OPEN EDUCATIONAL RESOURCES



Social collaborative initiative supporting learning communities and providing free educational resources for citizens



14

URBAN COMMUNITY GARDENS



Collectively managed neighbourhood vegetable gardens and green spaces



15

AGRO-ECOLOGICAL SHOP



Shop that sells ecological and seasonal local produce



16

PROJECT PROMOTING HEALTHCARE



Care-centred initiative that promotes health practices and intercultural dialogue





**TRANSFORMATIVE
ECONOMIES**

INITIATIVES

**TRANSFORMATIVE
ECONOMIES**

INITIATIVES

**TRANSFORMATIVE
ECONOMIES**

INITIATIVES

**TRANSFORMATIVE
ECONOMIES**

INITIATIVES

17

FOOD COOPERATIVE



Consumer cooperative shop where decisions regarding local food procurement and distribution are chosen by its members



18

ART THERAPY ASSOCIATION



Non-profit organisation implementing art and creative workshops to promote mental and physical care



19

TIME BANK



Network of associations that foster the exchange of services amongst individuals where the “currency” is time



20

RENEWABLE ENERGY COOPERATIVE



Cooperative supplier that offers renewable and socially responsible electricity





**TRANSFORMATIVE
ECONOMIES**

INITIATIVES

**TRANSFORMATIVE
ECONOMIES**

INITIATIVES

**TRANSFORMATIVE
ECONOMIES**

INITIATIVES

**TRANSFORMATIVE
ECONOMIES**

INITIATIVES

21

SELF-MANAGED COUNTRYSIDE SOCIAL CENTRE

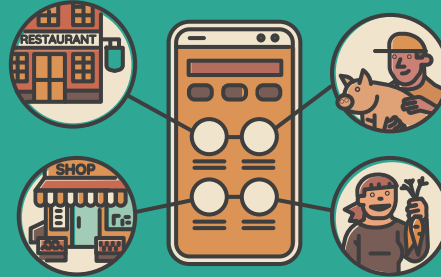


Self-managed social centre with agroecological practices



22

LETS (Local Exchange Trading System) APP



APP that reduces intermediaries by putting local biological food producers in direct contact with local restaurants, shops and consumers



23

PUBLIC POLICY COMMITTEE



Committee that develops political discussions and actions to promote social services, sustainability and feminist principles



24

LIBRARY OF COMMUNITY TOOLS AND SPACES



Self-managed community space where tools for carpentry, metalwork, industrial painting and other DIY activities can be rented for free (or with a small membership fee)





**TRANSFORMATIVE
ECONOMIES**

INITIATIVES

**TRANSFORMATIVE
ECONOMIES**

INITIATIVES

**TRANSFORMATIVE
ECONOMIES**

INITIATIVES

**TRANSFORMATIVE
ECONOMIES**

INITIATIVES

25

ETHICAL BANK



Bank whose actions and investments are socially and environmentally responsible



26

HOUSING COOPERATIVE



Housing cooperative that operates promotes “transfer of use” over private property.



27

SOCIAL INTEGRATION PROJECT



Centre that supports educational, social and economic integration, whilst attending to people’s needs and interests



28

ANTI-RACIST RESTAURANT



Restaurant and catering service centred around organic cuisine, promoting anti-racist values and social solidarity economy





**TRANSFORMATIVE
ECONOMIES**

INITIATIVES

**TRANSFORMATIVE
ECONOMIES**

INITIATIVES

**TRANSFORMATIVE
ECONOMIES**

INITIATIVES

**TRANSFORMATIVE
ECONOMIES**

INITIATIVES

UNION IS STRENGTH

1

Stand straight and line up together forming two rows. Each pair of players must use only one leg each to make 5 coordinated jumps. If you complete the action without putting the other foot on the floor, you can involve 2 active people of the colour you choose (take them from common pile) and you can move the pawn of the current economic system back one square.

IN TOUCH

2

Line up in a row: the last person draw an element related with agroecology on the back of the neighbour and the next persons do the same on their neighbours' backs. The first of the row will have to guess the drawing made by the last of the row. If the group manages to guess the drawn element, you can involve 2 active people of the color you choose (take them from common pile) and you can move the pawn of the current economic system back one square.

UNTANGLING TOGETHER

3

All players stand shoulder to shoulder in a circle, facing inwards. Players must then put both their hands in the circle and link up holding hands with two different people. If you manage to untangle the knot of arms without ever letting go of the people they are connected to, you can involve 2 active people of the color you choose (take them from common pile) and you can move the pawn of the current economic system back one square.

SHARE THE MESSAGE

4

Line up and starting with the player at one end whisper a sentence related to the social solidarity economy until it arrives at the end of the line. The last person will then write down what they believe they heard. If the written sentence is the same as the whispered sentence, you can involve 2 active people of the colour you choose (take them from common pile) and you can move the pawn of the current economic system back one square.

GUESS WHO

5

One player has the name of a famous person written on a piece of paper and placed on their forehead (where they cannot see it). The player must then ask Yes or No questions to try and figure out who is on their head. If the rest of the players manage (THE PLAYER MANAGES) to guess who the famous person is in 12 or less questions, you can involve 2 active people of the colour you choose (take them from common pile) and you can move the pawn of the current economic system back one square.

SHARED MOVEMENT

6

Make a circle, one player leads a dance and the other participants follow. The lead dancer should then suddenly stop moving and freeze. Other players will need to be attentive and freeze simultaneously. After everyone has copied the person's movement, the person on the right will take their turn to lead the dance. If you manage to complete the circle without making mistakes, you can involve 2 active people of the colour you choose (take them from common pile) and you can move the pawn of the current economic system back one square.

PICTORIGHTS

7

One player chooses a word/ phrase related to Human Rights and then attempts to draw it. The other players must guess the word in 30 seconds. If the group manages to guess correctly, you can involve 2 active people of the colour you choose (take them from common pile) and you can move the pawn of the current economic system back one square.

FROM WORD TO ACTION

8

One player chooses a word related to the local community and mimes it to the other players (without speaking, writing or lip-syncing) who have to try and guess the word. If the group manages to guess correctly, you can involve 2 active people of the colour you choose (take them from common pile) and you can move the pawn of the current economic system back one square.

MEETING POINT

9

Place this card in the centre of the table and each player takes a meeple. You have three attempts to throw your meeple from one step away, aiming for it to land on the card. If you get at least three meeples on the card you can involve 2 active people of the colour you choose (take them from common pile) and you can move the pawn of the current economic system back one square).



EVENT

TRANSFORMATIVE
ECONOMIES

EVENT

TRANSFORMATIVE
ECONOMIES

EVENT

TRANSFORMATIVE
ECONOMIES

EVENT

TRANSFORMATIVE
ECONOMIES

EVENT

TRANSFORMATIVE
ECONOMIES

EVENT

TRANSFORMATIVE
ECONOMIES

EVENT

TRANSFORMATIVE
ECONOMIES

EVENT

TRANSFORMATIVE
ECONOMIES

EVENT

TRANSFORMATIVE
ECONOMIES

BONDING WORDS

10

Say a word related to the game. The next player must say another related word that begins with the letter that ends the previous word and so on. If the group manages to play two rounds, so that everyone has said two words, you can involve 2 active people of the colour you choose (take them from common pile) and you can move the pawn of the current economic system back one square.

TRAVELLING

1

All players who have not traveled by plane in the last 2 months, involve 1 active person interested in agroecology (take it from the common pile).

FLEA MARKET

2

All players who have bought clothes in a flea market in the last 6 months, involve 1 active person interested in social solidarity economy (take it from the common pile).

WASTE MANAGEMENT

3

All players who have participated in a waste collection event to clean up a public place, involve 1 active person interested in communitarian economy (take it from the common pile).

ASSOCIATIONISM

4

All players who are members of a non-profit organisation, involve 1 active person interested in communitarian economy (take it from the common pile).

BIKING

5

All players who go to work/school by bike, involve 1 active person interested in agroecology (take it from the common pile).

FEMINIST SHOP

6

All players who have bought something in a feminist shop, involve 1 active person interested in feminist economy (take it from the common pile).

MARKET BAG

7

All players who use a tote bag when buying something in a market, involve 1 active person interested in communitarian economy (take it from common pile).

ETHICAL FINANCE

8

All players who use the services of ethical banking, involve 1 active person interested in social solidarity economy (take it from the common pile).



FREE OPEN SOURCE SOFTWARE

All players who use open source programmes, involve 1 active person interested in the commons (take it from the common pile).

GENDER EQUALITY

All players who have participated in an event to promote gender equality in the last year, involve 1 active person interested in feminist economies (take it from the common pile).

NEGATIVE EFFECTS



Industrial farming

NEGATIVE EFFECTS



Climate change

NEGATIVE EFFECTS



GMOs - Genetically Modified Organisms

NEGATIVE EFFECTS



Hyper-consumerism

NEGATIVE EFFECTS



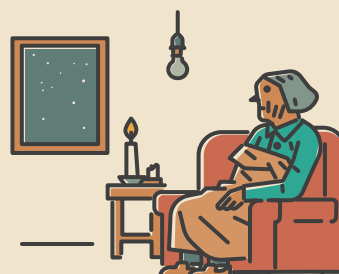
Monoculture

NEGATIVE EFFECTS



Social class division

NEGATIVE EFFECTS



Lack of access to energy resources

1

Small scale farm management

(based on agroecology)

- Non-profit social cooperative
- Eco-feminist centre
- Agroecological network for farmers
- Fair trade shop
- Permaculture centre
- Urban community gardens
- Agro-ecological shop
- Food cooperative
- Self-managed countryside social centre
- LETS (local exchange trading system) App
- Anti-racist restaurant



4

Conscious consumption

- Local currency
- Feminist bookshop
- Care network
- Fair trade shop
- Open educational resources
- Urban community gardens
- Food cooperative
- Time bank
- Library of community tools and spaces
- Ethical bank
- Housing cooperative

3

Rural, traditional and organic seeds

- Feminist cooperative
- Eco-feminist centre
- Agroecological network for farmers
- Fair trade shop
- Permaculture centre
- Open educational resources
- Urban community gardens
- Agro-ecological shop
- Self-managed countryside social centre
- LETS (local exchange trading system) App
- Anti-racist restaurant

2

Sustainable way of living that respects the environment

- Feminist cooperative
- Eco-feminist centre
- Agroecological network for farmers
- Permaculture centre
- Social enterprise
- Urban community gardens
- Agro-ecological shop
- Renewable energy cooperative
- LETS (local exchange trading system) App
- Ethical bank
- Housing cooperative

7

Sufficient energy supplies and energy saving

- Community centre
- Agroecological network for farmers
- Social enterprise
- Open educational resources
- Project promoting healthcare
- Time bank
- Renewable energy cooperative
- Self-managed countryside social centre
- Public policy committee
- Library of community tools and spaces
- Housing cooperative

6

Fair distribution of resources and wealth

- Non-profit social cooperative
- Local currency
- Fair trade shop
- Social enterprise
- Food cooperative
- Time bank
- Renewable energy cooperative
- Public policy committee
- Library of community tools and spaces
- Ethical bank
- Housing cooperative
- Social integration project

5

Permaculture

- Feminist cooperative
- Eco-feminist centre
- Agroecological network for farmers
- Fair trade shop
- Permaculture centre
- Open educational resources
- Urban community gardens
- Agro-ecological shop
- Self-managed countryside social centre
- LETS (local exchange trading system) App
- Social integration project
- Anti-racist restaurant

NEGATIVE EFFECTS



High number of depressed and burned out people

NEGATIVE EFFECTS



Hyper-individualism

NEGATIVE EFFECTS



Homelessness

NEGATIVE EFFECTS



Elder abandonment

NEGATIVE EFFECTS



Multinational corporations

NEGATIVE EFFECTS



Gentrification of multicultural neighbourhoods

NEGATIVE EFFECTS



Privatisation of public spaces

NEGATIVE EFFECTS



Lack of social services

NEGATIVE EFFECTS



Gender wage gap

<p style="text-align: right;"># 10</p> <h2 style="text-align: center;">Ensuring the right and access to housing for everyone</h2> <ul style="list-style-type: none"> Community centre Solidarity association for women Eco-feminist centre Feminist bookshop Care network Project promoting healthcare Time bank Self-managed countryside social centre Public policy committee Ethical bank Housing cooperative 	<p style="text-align: right;"># 9</p> <h2 style="text-align: center;">Community building</h2> <ul style="list-style-type: none"> Feminist cooperative Community centre Non-profit social cooperative Solidarity association for women Care network Food cooperative Art therapy association Time bank Renewable energy cooperative Library of community tools and spaces Housing cooperative Social integration project 	<p style="text-align: right;"># 8</p> <h2 style="text-align: center;">Mental health community programmes</h2> <ul style="list-style-type: none"> Community centre Non-profit social cooperative Solidarity association for women Feminist bookshop Care network Social enterprise Urban community gardens Project promoting healthcare Art therapy association Public policy committee Social integration project
<p style="text-align: right;"># 13</p> <h2 style="text-align: center;">Affordable and / or cooperative housing and measures to avoid mass tourism</h2> <ul style="list-style-type: none"> Community centre Solidarity association for women Local currency Feminist bookshop Care network Urban community gardens Project promoting healthcare Food cooperative Time bank Public policy committee Library of community tools and spaces Housing cooperative Social integration project Anti-racist restaurant 	<p style="text-align: right;"># 12</p> <h2 style="text-align: center;">Local markets</h2> <ul style="list-style-type: none"> Feminist cooperative Non-profit social cooperative Eco-feminist centre Local currency Agroecological network for farmers Fair trade shop Permaculture centre Social enterprise Agro-ecological shop Renewable energy cooperative LETS (local exchange trading system) App Library of community tools and spaces Ethical bank Anti-racist restaurant 	<p style="text-align: right;"># 11</p> <h2 style="text-align: center;">Community care system</h2> <ul style="list-style-type: none"> Community centre Solidarity association for women Care network Social enterprise Urban community gardens Project promoting healthcare Art therapy association Time bank Self-managed countryside social centre Public policy committee Social integration project
<p style="text-align: right;"># 16</p> <h2 style="text-align: center;">Gender equality</h2> <ul style="list-style-type: none"> Feminist cooperative Non-profit social cooperative Solidarity association for women Eco-feminist centre Feminist bookshop Care network Fair trade shop Social enterprise Food cooperative Public policy committee Anti-racist restaurant 	<p style="text-align: right;"># 15</p> <h2 style="text-align: center;">Access to public welfare services for all</h2> <ul style="list-style-type: none"> Community centre Local currency Care network Open educational resources Urban community gardens Project promoting healthcare Art therapy association Time bank Public policy committee Library of community tools and spaces Social integration project 	<p style="text-align: right;"># 14</p> <h2 style="text-align: center;">Creation or rehabilitation of public and common spaces</h2> <ul style="list-style-type: none"> Community centre Solidarity association for women Open educational resources Urban community gardens Project promoting healthcare Time bank Renewable energy cooperative LETS (local exchange trading system) App Public policy committee Library of community tools and spaces Social integration project

NEGATIVE EFFECTS



Denial of human rights

NEGATIVE EFFECTS



Devaluation of reproductive work

NEGATIVE EFFECTS



Sexism

NEGATIVE EFFECTS



Housing crisis

NEGATIVE EFFECTS



Exploitative working conditions

NEGATIVE EFFECTS



Planned obsolescence

NEGATIVE EFFECTS



High unemployment

NEGATIVE EFFECTS



Lack of affordable child care

<p style="text-align: right;"># 19</p> <h3 style="text-align: center;">End of patriarchy</h3> <p>Feminist cooperative</p> <hr/> <p>Community centre</p> <hr/> <p>Non-profit social cooperative</p> <hr/> <p>Solidarity association for women</p> <hr/> <p>Eco-feminist centre</p> <hr/> <p>Feminist bookshop</p> <hr/> <p>Care network</p> <hr/> <p>Social enterprise</p> <hr/> <p>Open educational resources</p> <hr/> <p>Art therapy association</p> <hr/> <p>Social integration project</p>	<p style="text-align: right;"># 18</p> <h3 style="text-align: center;">Acknowledgment and sharing of reproductive work</h3> <p>Feminist cooperative</p> <hr/> <p>Non-profit social cooperative</p> <hr/> <p>Solidarity association for women</p> <hr/> <p>Eco-feminist centre</p> <hr/> <p>Feminist bookshop</p> <hr/> <p>Care network</p> <hr/> <p>Fair trade shop</p> <hr/> <p>Food cooperative</p> <hr/> <p>Time bank</p> <hr/> <p>Public policy committee</p> <hr/> <p>Social integration project</p>	<p style="text-align: right;"># 17</p> <h3 style="text-align: center;">Policies to promote human rights and social justice</h3> <p>Solidarity association for women</p> <hr/> <p>Feminist bookshop</p> <hr/> <p>Care network</p> <hr/> <p>Fair trade shop</p> <hr/> <p>Permaculture centre</p> <hr/> <p>Open educational resources</p> <hr/> <p>Project promoting healthcare</p> <hr/> <p>Art therapy association</p> <hr/> <p>Public policy committee</p> <hr/> <p>Ethical bank</p> <hr/> <p>Social integration project</p> <hr/> <p>Anti-racist restaurant</p>
<p style="text-align: right;"># 22</p> <h3 style="text-align: center;">Sustainable production and 5 Rs strategy (refuse, reduce, reuse, repurpose, and recycle)</h3> <p>Non-profit social cooperative</p> <hr/> <p>Agroecological network for farmers</p> <hr/> <p>Fair trade shop</p> <hr/> <p>Permaculture centre</p> <hr/> <p>Social enterprise</p> <hr/> <p>Open educational resources</p> <hr/> <p>Agro-ecological shop</p> <hr/> <p>Self-managed countryside social centre</p> <hr/> <p>LETS (local exchange trading system) App</p> <hr/> <p>Library of community tools and spaces</p> <hr/> <p>Ethical bank</p>	<p style="text-align: right;"># 21</p> <h3 style="text-align: center;">Decent and democratic working conditions</h3> <p>Feminist cooperative</p> <hr/> <p>Non-profit social cooperative</p> <hr/> <p>Solidarity association for women</p> <hr/> <p>Eco-feminist centre</p> <hr/> <p>Care network</p> <hr/> <p>Fair trade shop</p> <hr/> <p>Permaculture centre</p> <hr/> <p>Social enterprise</p> <hr/> <p>Food cooperative</p> <hr/> <p>Self-managed countryside social centre</p> <hr/> <p>Anti-racist restaurant</p>	<p style="text-align: right;"># 20</p> <h3 style="text-align: center;">Universal, quality housing for everyone. End the commodification of housing</h3> <p>Community centre</p> <hr/> <p>Solidarity association for women</p> <hr/> <p>Eco-feminist centre</p> <hr/> <p>Local currency</p> <hr/> <p>Social enterprise</p> <hr/> <p>Time bank</p> <hr/> <p>Renewable energy cooperative</p> <hr/> <p>Self-managed countryside social centre</p> <hr/> <p>Public policy committee</p> <hr/> <p>Ethical bank</p> <hr/> <p>Housing cooperative</p>
	<p style="text-align: right;"># 24</p> <h3 style="text-align: center;">Public policies and mutual practices for comprehensive child care</h3> <p>Feminist cooperative</p> <hr/> <p>Community centre</p> <hr/> <p>Solidarity association for women</p> <hr/> <p>Care network</p> <hr/> <p>Social enterprise</p> <hr/> <p>Open educational resources</p> <hr/> <p>Urban community gardens</p> <hr/> <p>Project promoting healthcare</p> <hr/> <p>Time bank</p> <hr/> <p>Public policy committee</p>	<p style="text-align: right;"># 23</p> <h3 style="text-align: center;">Social Solidarity Economy collectively managed work opportunities</h3> <p>Feminist cooperative</p> <hr/> <p>Non-profit social cooperative</p> <hr/> <p>Solidarity association for women</p> <hr/> <p>Local currency</p> <hr/> <p>Feminist bookshop</p> <hr/> <p>Social enterprise</p> <hr/> <p>Open educational resources</p> <hr/> <p>Agro-ecological shop</p> <hr/> <p>Food cooperative</p> <hr/> <p>Self-managed countryside social centre</p> <hr/> <p>Library of community tools and spaces</p> <hr/> <p>Ethical bank</p> <hr/> <p>Anti-racist restaurant</p>

JUNIOR

NEGATIVE EFFECTS



CLIMATE CHANGE



JUNIOR

NEGATIVE EFFECTS



SOCIAL EXCLUSION



JUNIOR

NEGATIVE EFFECTS



GENDER INEQUALITY



JUNIOR

NEGATIVE EFFECTS



DEMOCRACY AT RISK



JUNIOR

NEGATIVE EFFECTS



HYPER-CONSUMERISM





THE CHANGE

End of Patriarchy

THE CHANGE

Social inclusion

THE CHANGE

Sustainable way of living that respects the environment

THE CHANGE

Sustainable production and 5 Rs strategy
(refuse, reduce, reuse, repurpose, and recycle)

THE CHANGE

The promotion of human rights and social justice